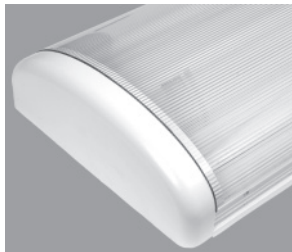


Sconce Models

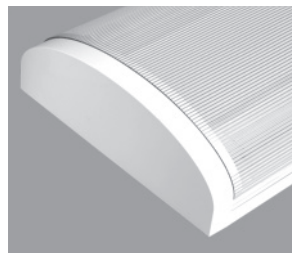


Specifications

- **Housing:** Marine grade aluminum. Extruded back-plate with architectural yet rugged die cast end caps End caps available in round or square profiles. Conduit ready knockouts accessible from the inside of casting (not visible from the finish side). Finish is a post production polyester powder coat. Semi-gloss textured white as standard color. Optional and architectural colors available (see ordering information)
- **Lens:** Positive interlocking, extruded polycarbonate lens with integral linear prisms. High impact polycarbonate material is lighting grade and UV stabilized.
- **Gasket:** Lens sealed to the housing ends with silicone sponge gasket. Wet location and IP65 gasketing available, see options.
- **Fasteners:** Center pin reject allen-head standard. See options list for alternatives.
- **Lamps:** See ordering information for various lamping options. Lamps are supplied by others.
- **Finish:** Housing and end caps are painted with a high quality semi-gloss Polyester Powder coat process. Textured white as standard with any RAL color available (see ordering information).
- **Ballasts:** Class P, Sound rated A electronic ballasts as standard. See ordering options for lamp ballast combinations or for dimming and emergency ballast operation.
- **Mounting:** Ceiling or wall mount, single or continuous row options available. Additional hardware is needed for continuous row installation (see ordering information).
- **Listings/Certifications:** U.L./C.U.L. listing (wet location available). Meets American Disabilities Act (ADA) requirements for wall-mounted applications. NSF, IP65 options available.



Round die-cast aluminum end caps.



Square die-cast aluminum end caps.



Specifier's Reference

Project	
Type	Model No.
Comments	

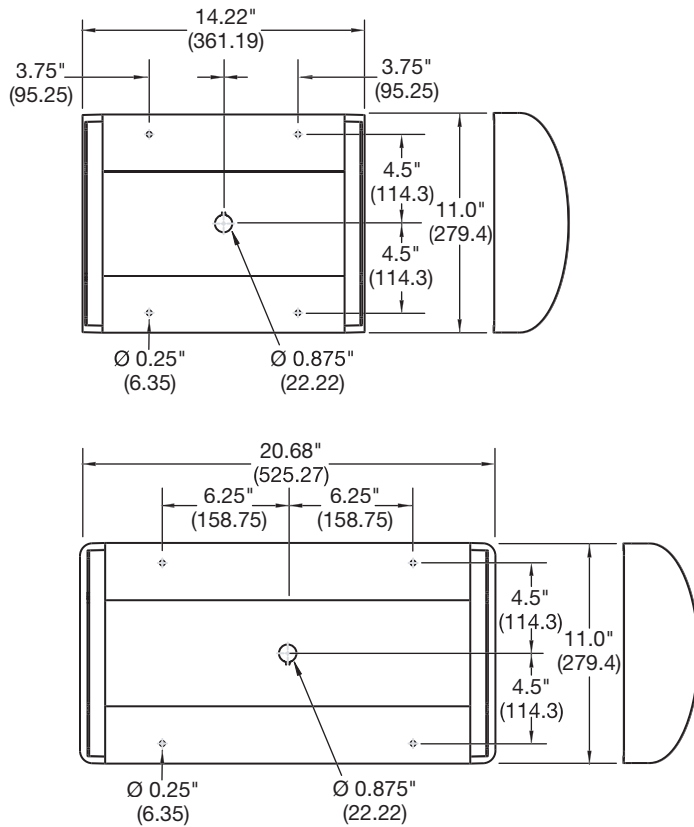
Protector™ 11 inch Series

Vandal-Resistant with an Architectural Appeal

MORLITE
MORE THAN TOUGH

Mounting and Dimensional Data

Score Models



Easy Spec: Fixture shall be Morlite Protector Series architectural vandal resistant, eleven-inch profile, ADA compliant. Marine grade, extruded aluminum housing and die cast aluminum end caps. Lighting grade, UV stabilized, positive interlocking polycarbonate lens. Lens retention shall also include tamper resistant fasteners.

More than Tough Guarantee: Morlite Vandal resistant products are designed and manufactured to stand up to high physical abuse. When applied and installed according to our instruction, Morlite will warrant and repair or replace any product left inoperable due to physical punishment for the product life of the installation. See published warranty for additional details.

Photometrics: Available from factory.

Ordering Information

Series	Width	Ends	Length (inches)	# Lamps	Lamp Type	Fasteners	Options	Voltage
VLP	11							
		-S Square End Caps	12 18	1 2	-13 13 watt twin -13Q 13 watt quad -18Q 18 watt quad -26Q 26 watt quad -32T 32 watt TRT -42T 42 watt TRT	-F1 Allen Head Center Pin Reject -F2 Torx Head Center Pin Reject -PHS Phillips Head	-EMG *Emergency battery pack -WL Wet location -LT Low Temp. ballast -GLR HLR/GLR fusing -EDB Electronic Dimming ballast -WO White opal polycarbonate -RAL Special color	-120V -277V -347V

* 18 inch model only